



***Generative AI framework***

# Why GenMS™?

**GenMS** is Management Solutions' framework for building, testing and deploying **Generative Artificial Intelligence (GenAI) tools**.

Developed from the experience and knowledge accumulated by the Firm, this framework offers a comprehensive approach, from design and technological implementation to validation and regulatory compliance, to ensure that advanced and reliable solutions in the field of Generative Artificial Intelligence are achieved with great agility.

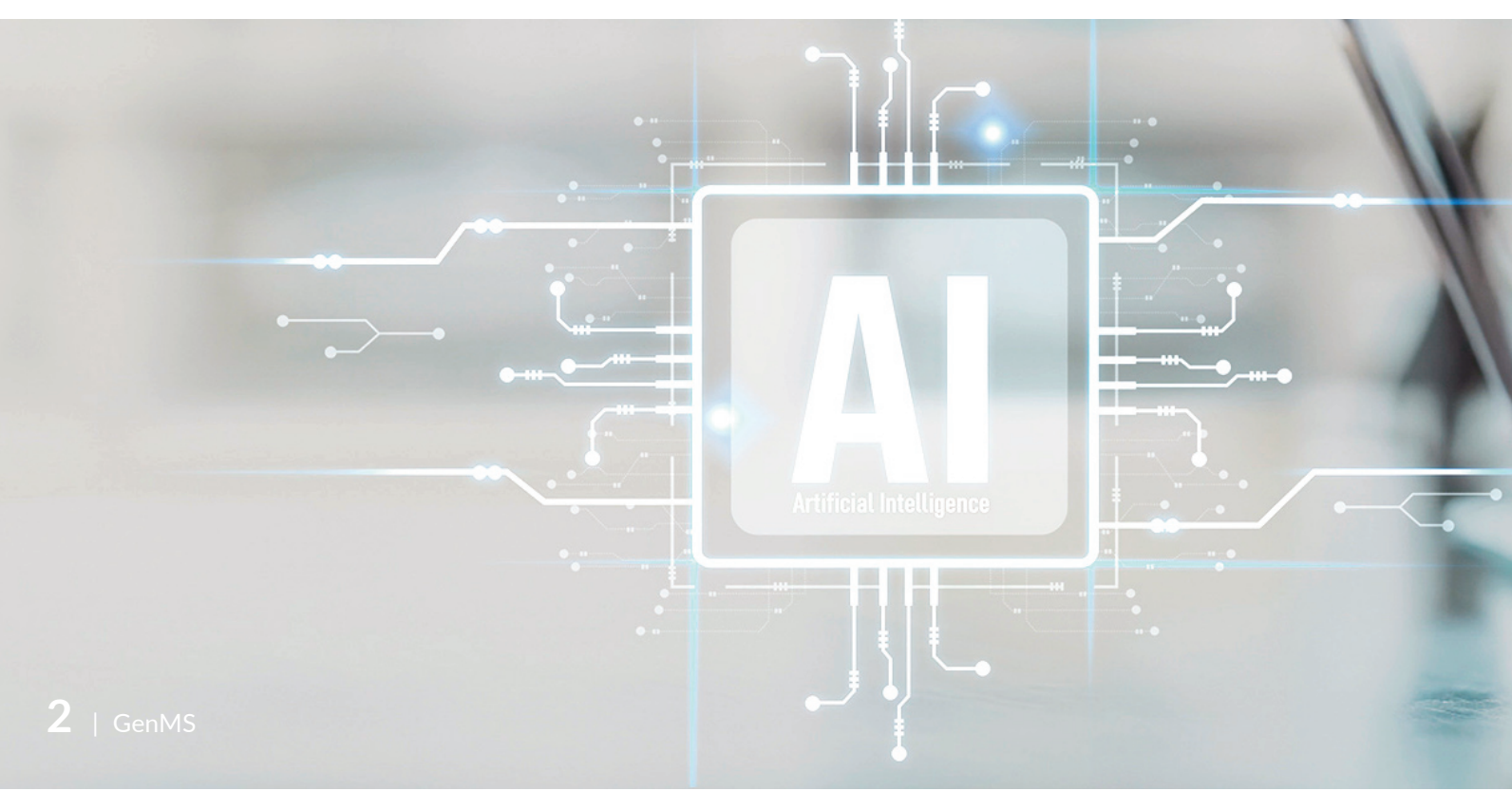
**GenMS** provides answers to the key challenges faced by all industries in relation to Generative AI and LLM, making it possible to:

- ▶ Customize GenAI solutions to optimize business processes.
- ▶ Effectively integrate GenAI with existing infrastructure and data.
- ▶ Leverage knowledge from previous GenAI projects.
- ▶ Develop and deploy GenAI applications.
- ▶ Comply with emerging GenAI regulations or existing regulations such as the AI Act.
- ▶ Test and validate GenAI use cases.

---

**Management Solutions** has designed the **GenMS** framework to enable the development of **GenAI** use cases, accelerate time to market, and ensure regulatory compliance

---





# GenMS™ Outreach

**GenMS** components are useful in all phases of building a GenAI system: design, development and deployment. In each of these phases, **GenMS** can add value to the activities and processes listed below.



## Design

- ▶ Functional definition and conceptualization of a use case based on the developed minimum viable product (MPV).
- ▶ Identifying, selecting and configuring the necessary technological resources.
- ▶ Technical design for system development and production.



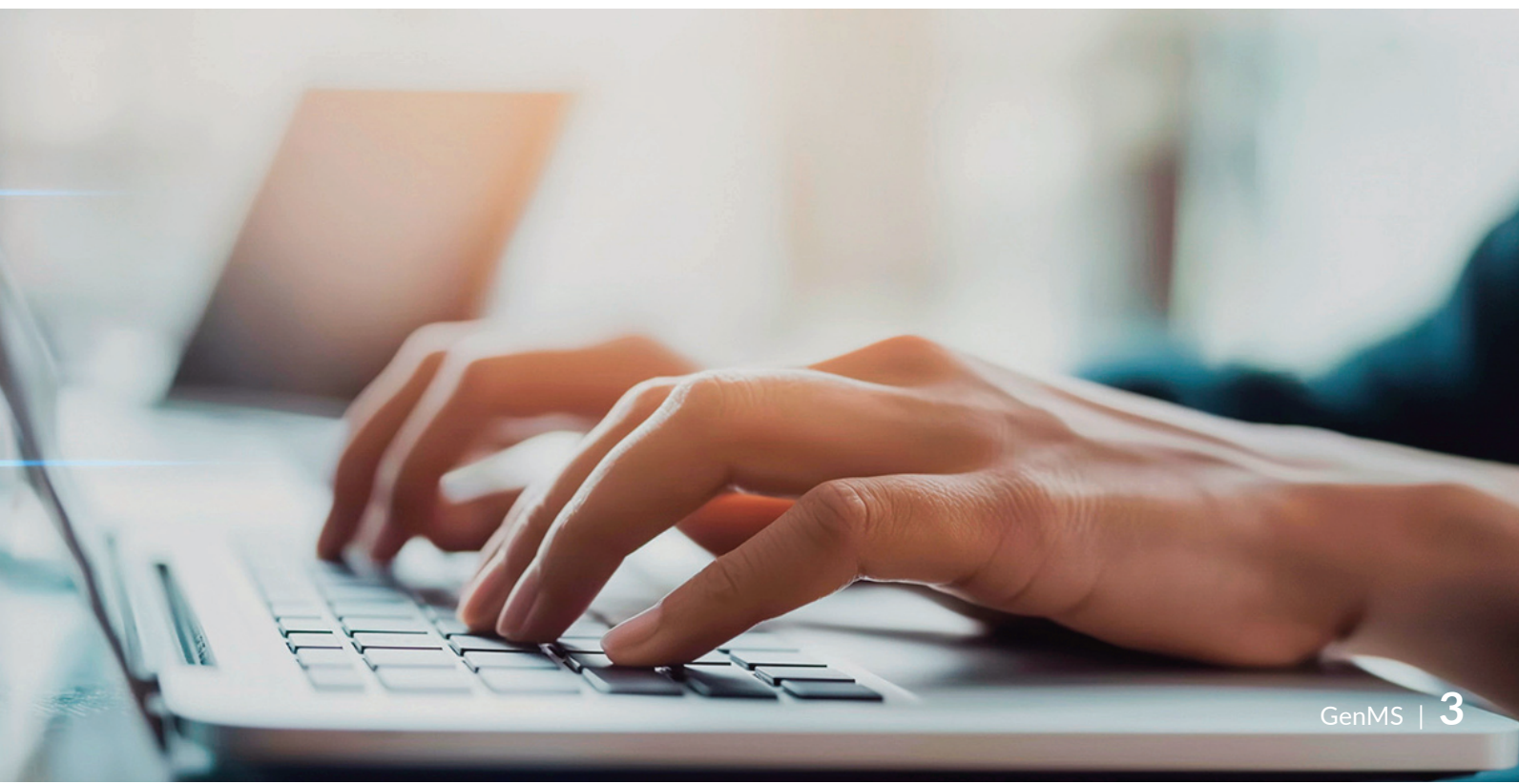
## Development

- ▶ System and application construction, based on front-end components and GenMS codes.
- ▶ Testing and evaluation, based on GenMS ATLAS.
- ▶ Checking compliance with the AI Act and documentation.
- ▶ Configuration and preparation for deployment to production.



## Deployment

- ▶ Integration with existing processes and tools.
- ▶ Scaling users and resources while monitoring performance and minimizing costs.
- ▶ On-premise, private cloud or SaaS deployment in Management Solutions' private cloud.



# GenMS™ features

The solutions created within the GenMS framework have the following characteristics:



## Customization

**Tailored** to the customer, incorporating the necessary expertise within the solution.



## Accuracy

**Precise**, combining the different state-of-the-art techniques in the field of language modeling.



## Quantification

**Quantifiable** results, since their impact on the business can be easily measured in terms of time savings or other KPIs.



## Efficiency

**Efficient** to develop and deploy, minimizing technology infrastructure costs.



## Flexibility

**Flexible** deployment (cloud or on-premise).



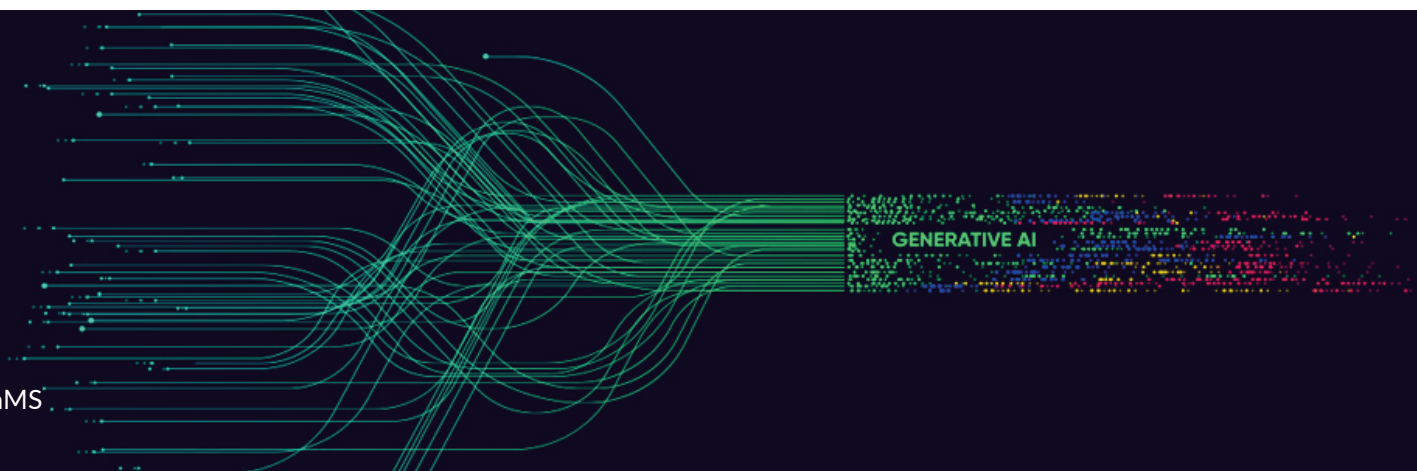
## Scalability

**Scalable**, thanks to our experience and partnerships with leading cloud providers.



## Compliant

**Compliant** with regulations, including the AI Act.



# Components of the GenMS™ framework



## Front-end components

Pre-compiled, customizable and reusable user interface elements that ensure a consistent look and feel across all tools and a fast time-to-market.



## Code libraries

Optimized, robust and reusable back-end components developed in-house and combined with open source.



## Knowledge repository

Collection of best practices and most commonly used techniques:

- ▶ Prompt engineering.
- ▶ Retrieval augmented generation (RAG).
- ▶ Knowledge graphs.
- ▶ Multi-agent system.



## Secured multi-cloud

Highly secured development and deployment options on Amazon Web Services, Google Cloud or Microsoft Azure, protecting sensitive data.



## Language models (LLMs)

Proprietary: Gemini, GPT-4o, Claude.  
Open-source: Mistral, Llama, Gemma, Vicuna, Phi, SeamlessM4T, etc.



## Compliance by-design

Solutions are designed to pass all tests defined in GenMS ATLAS (Advanced Testing of Language AI Systems), and to comply with AI regulations (as a reference to the AI Act) from the start.

**GenMS™ is a robust and complete framework for developing GenAI systems, and its components can be used to accelerate projects in all types of organizations.**

# GenMS™ use case reference

Management Solutions has extensive capabilities and references in the GenAI field, combined with a deep understanding of technology and business processes.

Thanks to **GenMS**, Management Solutions has developed use cases in the areas of process automation, information analysis and extraction, and decision support. Below are some examples of use cases implemented at our clients:

---

## Process automation

---

### Astronomer

**GenMS Astronomer** enables webscraping of regulatory and supervisory websites, searching for relevant changes in the regulations published on those websites. It also writes summaries of the identified updates and tags them for further filtering.

### Veritas

**GenMS Veritas** is a document analyzer that allows you to compare the legal clauses of a contract with internal general terms and conditions, and identifies discrepancies between the two.

### AI Act Checker

**GenMS AI Act Checker** is a form that generates the regulatory requirements that an artificial intelligence (AI) system must meet in accordance with the AI Act.

### Sentinel

**GenMS Sentinel** is a tool that assigns a qualitative credit rating to a company based on the information provided about it.

### Dialect

**GenMS Dialect** is a translator that converts SAS programming code into Python programming code.

---

## Analytics and information extraction

---

### Analyst

**GenMS Analyst** is a multi-agent conversational chatbot that allows users to ask questions about the content of a database using natural language without the need for expert technical knowledge.

### Intelligence

**GenMS Intelligence** is a chatbot that allows you to ask questions about internal policies and procedures. It also allows you to ask questions about PDFs and search the web.

### Saluto

**GenMS Saluto** is a CV analyzer for extracting information and storing it in a structured database so that it can be processed later.

### Renovatio

**GenMS Renovatio** is a version control tool that allows you to compare two versions of the same document. Its purpose is to quickly find significant differences between an updated version and an old version of the same document.

### Insight

**GenMS Insight** is a chatbot aimed at employees for consulting manuals on Jira, aimed at providing support in the process of adopting Jira Software Server.



---

## Decision support

---

### AuditEase

**GenMS AuditEase** is a wizard for drafting audit recommendations and audit reports based on a set of pre-defined findings.

### Starlight

**GenMS Starlight** is an audit findings generator that compares the documentation of a process with the applicable regulations, identifies findings and classifies their severity.

### Scarlet

**GenMS Scarlet** is a model validation assistant that identifies validation findings based on the model documentation, internal validation guidelines and applicable regulations.

### Eventum

**GenMS Eventum** is a detector of events that have occurred, obtained from real-time news. Eventum is aimed at the re-planning of routes in a logistics company.

## Management Solutions

A leading business consulting firm

**Management Solutions is an international consulting Firm** focused on consulting for business, risks, organization and processes, in both their functional components and in the implementation of their related technologies.

**Management Solutions** Management Solutions currently has a multidisciplinary team (functional, mathematical, technical and systems integration) of 4,000 professionals, and operates through 48 offices (in Europe, Americas, Asia, Africa and Oceania) where we serve customers operating in more than 50 countries.

Management Solutions' differentiating factor lies in its in-depth knowledge of the businesses in which its clients operate and in its high degree of sector-specific and functional specialization.

For further information you may contact:

Javier Calvo Martín  
Partner at Management Solutions  
javier.calvo.martin@managementsolutions.com

Manuel Ángel Guzmán  
Partner at Management Solutions  
manuel.guzman@managementsolutions.com

Segismundo Jiménez Lainez  
Manager at Management Solutions  
segismundo.jimenez@msspain.com

**Management Solutions, Professional Consulting Services**

**Management Solutions** is an international consulting firm whose core mission is to deliver business, risk, financial, organisation, technology and process-related advisory services

For further information please visit [www.managementsolutions.com](http://www.managementsolutions.com)

Follow us at:     

© **Management Solutions. 2025**

All rights reserved

[www.managementsolutions.com](http://www.managementsolutions.com)

Madrid Barcelona Bilbao Coruña Málaga London Frankfurt Düsseldorf Vienna Paris Amsterdam Copenhagen Oslo Stockholm Warszawa Wrocław Zürich  
Milano Roma Bologna Lisboa Beijing Istanbul Abu Dhabi Johannesburg Sydney Toronto New York New Jersey Boston Pittsburgh Atlanta Birmingham Houston  
Miami SJ de Puerto Rico San José Ciudad de México Monterrey Querétaro Medellín Bogotá Quito São Paulo Rio de Janeiro Lima Santiago de Chile Buenos Aires